

Marco Momi

TRE NUDI

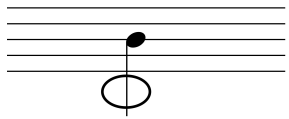
for piano

Opera commissionata dal "Festival Nuovi Spazi Musicali" di Roma
per la 28° edizione

LEGEND



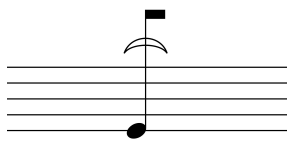
prepared note, press the key as usual
(the adhesive tape brings down the pitch 1/2 tone ca.)



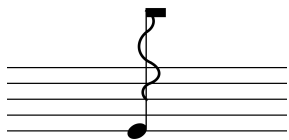
press the key slowly avoiding that the hammer hits the strings



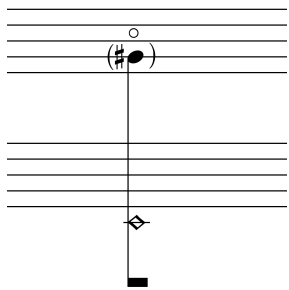
pluck the string (with a medium hardness plectrum or with nail)



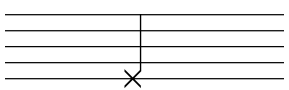
damp the strings with finger
The damping position may be indicated separately on the score
(i.e. position A or B)



scratch the string with nail



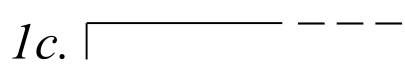
natural harmonic: skim the string corresponding to the lowest
written note in order to obtain the marked harmonic



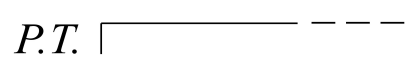
hit the string (or the plug of rubber) with fingertip



modulate the pedal's release as indicated

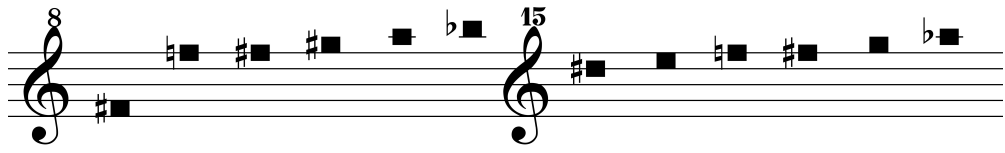


Una Corda pedal

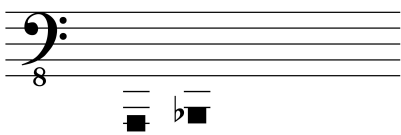


sostenuto pedal (*Pedale Tonale*)

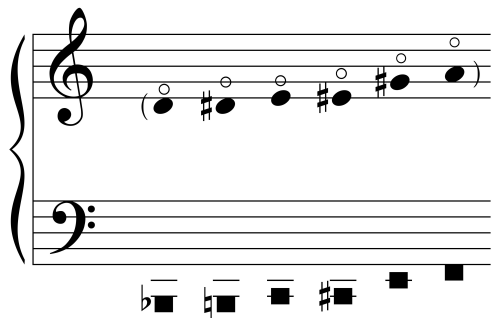
PREPARATIONS



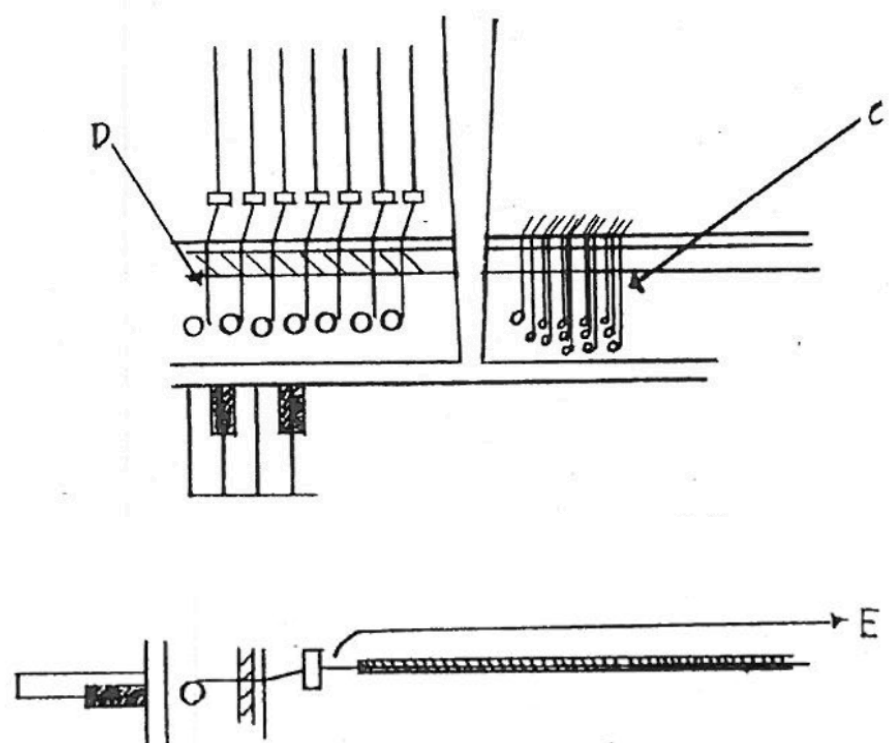
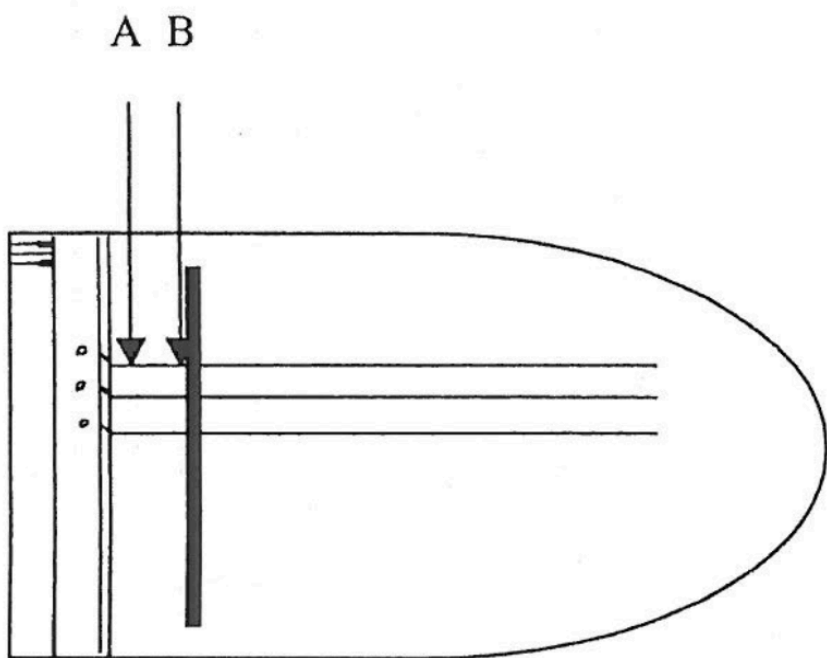
place adhesive tape (Leukosilk Green[®]) along the indicated strings over the full length. The lower F#⁵ must be partially covered so to detune it a 1/4 of a tone lower



place a plug of rubber (white pencil eraser or equivalent) between the lowest two strings to damp them both. Place the eraser close to the beginning of the strings and before the dampers. The sound produced by hitting the keys should be low, deep and meaningful



place a small plug of rubber (white pencil eraser or equivalent) between the two strings in order to obtain the 3rd major harmonics

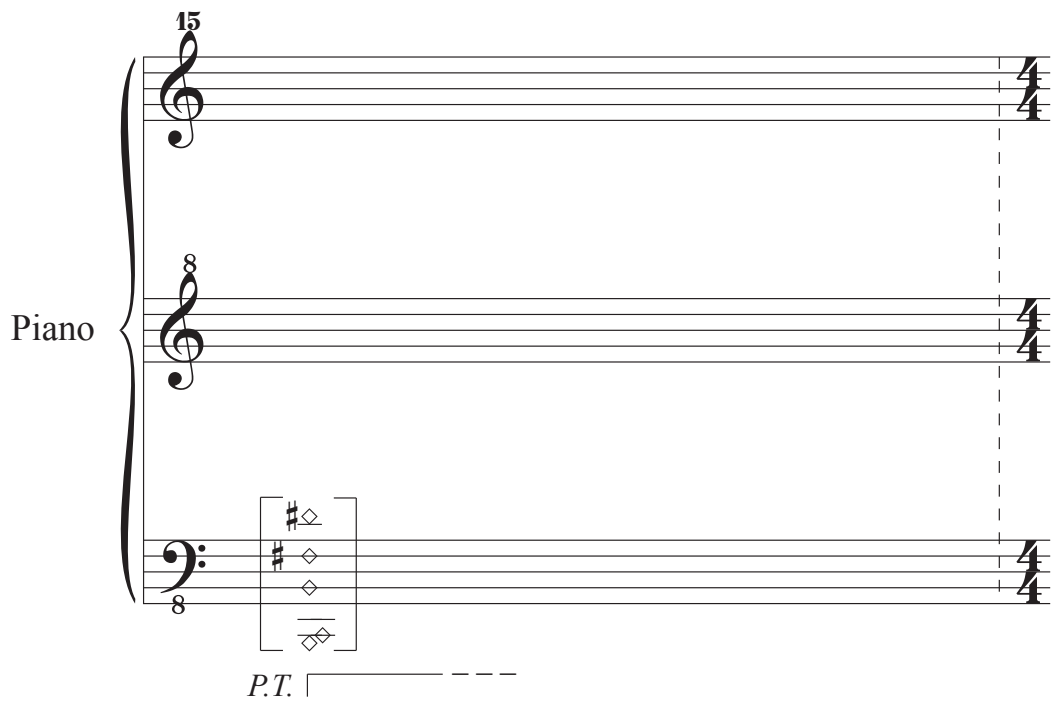


Marco Momi
TRE NUDI

I.

a Sabrina Carazzo

Piano



15

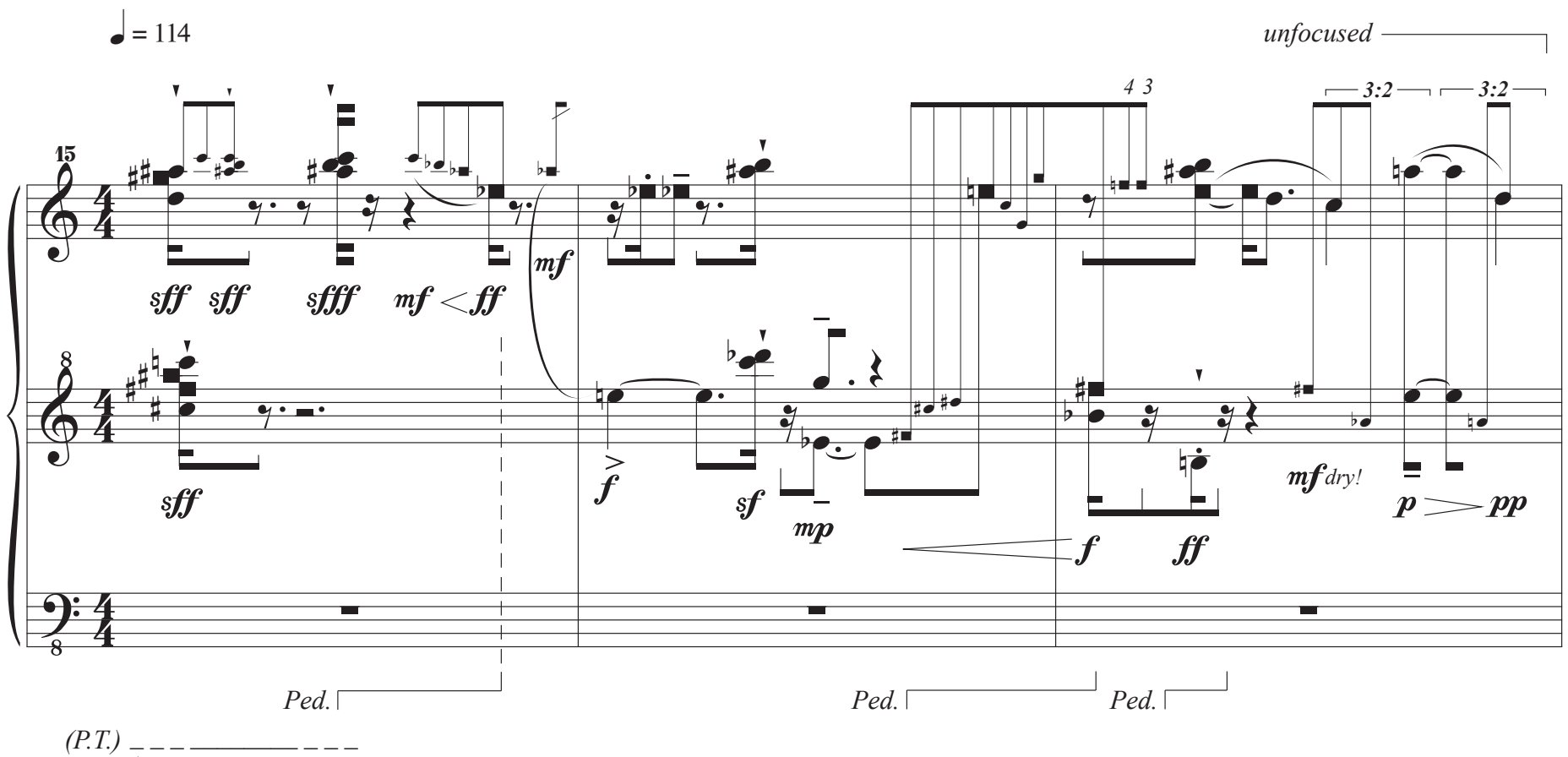
8

P.T. [-----]

Detailed description: This block shows the piano introduction for the first system. It consists of three staves: two treble clefs and one bass clef. The key signature has two sharps (F# and C#), and the time signature is 4/4. The first two staves are marked with a '15' at the beginning. The bass staff has an '8' at the beginning. A bracket labeled 'P.T.' spans the bottom of the staves. The introduction ends with a dashed line.

$\text{♩} = 114$

unfocused



15

sff sff sfff mf < ff

sff

f

sf

mp

f

ff

mf dry!

p > pp

Ped. [-----]

Ped. [-----]

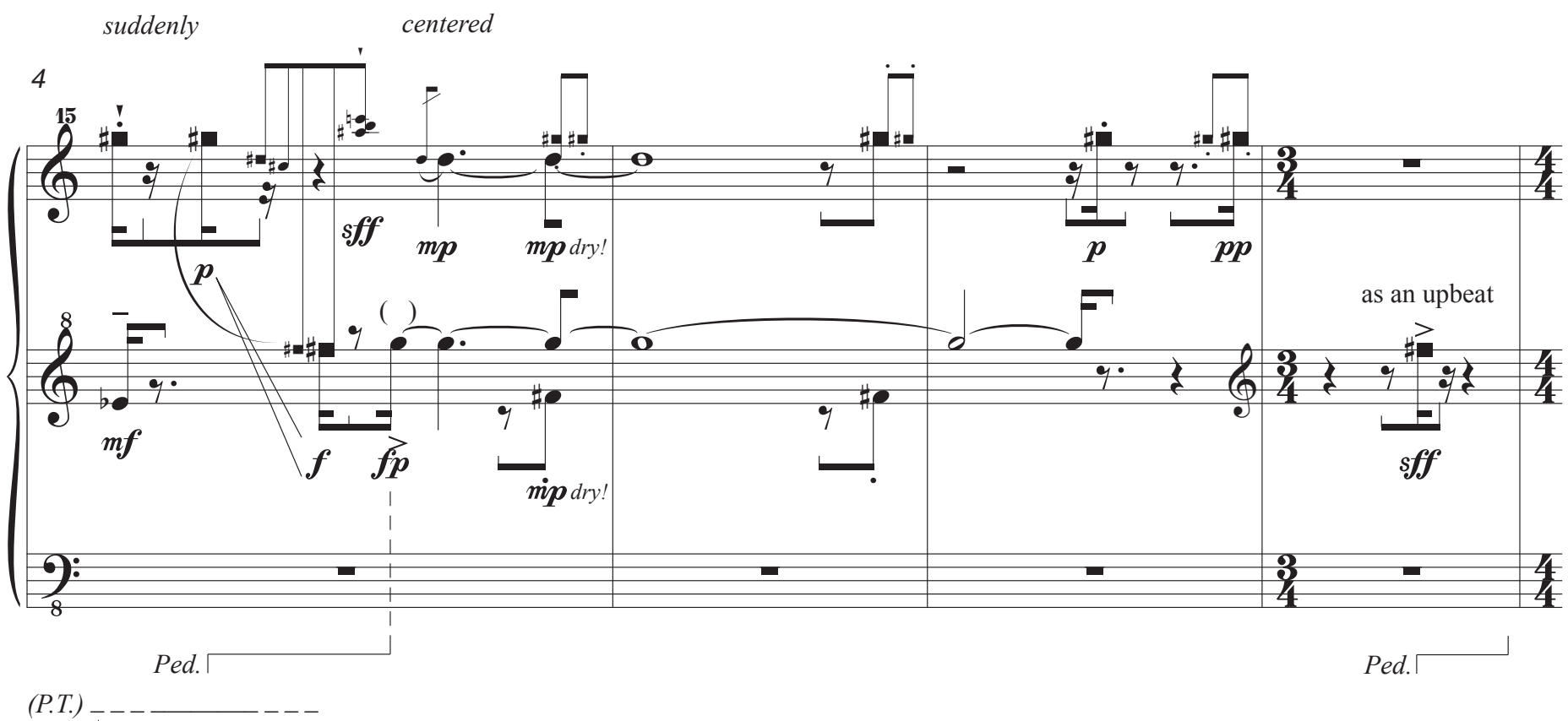
Ped. [-----]

(P.T.) [-----]

Detailed description: This block contains the first system of the piano score. It features three staves in 4/4 time. The tempo is marked as quarter note = 114. The music starts at measure 15. The first staff has dynamics *sff sff sfff mf < ff*. The second staff has *sff*. The third staff has *f sf mp f ff mf dry! p > pp*. There are performance markings: 'unfocused' above the first staff, 'Ped.' below the first and second staves, and '(P.T.)' below the bass staff. Rhythmic markings include '4 3' and '3:2' above the first staff.

suddenly

centered



4

15

p

sff

mp

mp dry!

p

pp

mf

f

fp

mp dry!

as an upbeat

sff

Ped. [-----]

Ped. [-----]

(P.T.) [-----]

Detailed description: This block contains the second system of the piano score. It features three staves in 4/4 time. The music starts at measure 4. The first staff has dynamics *p sff mp mp dry! p pp*. The second staff has *mf f fp mp dry! as an upbeat sff*. The third staff has *mf*. There are performance markings: '*suddenly*' and '*centered*' above the first staff, 'Ped.' below the first and second staves, and '(P.T.)' below the bass staff. A time signature change to 3/4 is indicated at the end of the system.

8 *ineluctable, flat* *tense!*

sff *pp* *f ff* *fp* *sf*

pp *f* *ff* *sf*

sff *Ped.* *sf* *ff* *Ped.*

(P.T.) -----

11 *grace note on the beat* *ritenuto molto*

sff *sfff* *ff* *grace note on the beat* *resolute* *dense!* *glacial*

sf *sf* *ff* *f* *mf*

Ped. *ff* *ff* *f* *Ped.*

(P.T.) -----

14 *tempo I*

mf *mp* *sf* *f* *p* *fff*

Ped. *Ped.*

(P.T.) -----

17

15

focus on the P.T. resonance so to link it with the following E flat

release the Ped. slowly seeking for the P.T. resonance to come out

coming out of the resonance

3:2

pp *ppp* *fff*

pp

(Ped.) _____

(P.T.) _____

21

15

flat

sharp!

fff p *fff* *ff* *p* *f* *mf* *fff*

ff *sf p* *pp* *p* *f*

fff

(Ped.) _____

(P.T.) _____

24

15

extremely violent!

fff *fff* *sim...*

fff *sim...* *sf*

(Ped.) _____

(P.T.) _____

5

II.

♩ = 52ca.

Voice [SH]

p fix

drag the bicycle's inner tube section along the string in C position. As a tiny cymbal with no attack - it may be longer than indicated

B

damp the string transitioning between A and B position as indicated

grace notes always fast

f

pppp

Ped. |-----

1c. |-----

4

Voice

A **B**

with nail

grace note on the beat

sf *pppp* *mf* *pppp* *f*

(Ped.) |-----

(1c.) |-----

♩ = 48ca.

7

position the mouth so to obtain overtones transitioning between vowels - the gesture is in the background and it may be shorter than indicated

[u] ————— [o] ————— [a] ————— [e] ————— [i]

p

hypnotic, tired

f *mp* *pppp* *pp* *mp a bit highlighted* *mf*

8va

(no sound)

3:2

with nail

(Ped.) |-----

(1c.) |-----

10

♩ = 42 ca.

as an upbeat

gliss. in D position with plectrum (before the bridge!)

damp in A position with R.H. hand side

mf *ff* *mp* *ff* *p*

(Ped.)

Detailed description: This block contains the musical notation for measures 10, 11, and 12. It features three staves: a grand staff (treble and bass clefs) and a separate treble clef staff. Measure 10 shows a glissando in the grand staff and a half note in the treble staff. Measure 11 contains a half note in the grand staff and a quarter note in the treble staff. Measure 12 features a half note in the grand staff and a quarter note in the treble staff. Dynamic markings include *mf*, *ff*, and *mp* in the grand staff, and *ff* and *p* in the treble staff. A pedaling line is shown below the grand staff.

13

1/2 Whistle

hit the eraser with the finger without hitting the key

f *ff* *p*

(Ped.)

Detailed description: This block contains the musical notation for measures 13, 14, and 15. It features three staves: a grand staff (treble and bass clefs) and a separate treble clef staff. Measure 13 shows a half note in the grand staff and a quarter note in the treble staff. Measure 14 contains a half note in the grand staff and a quarter note in the treble staff. Measure 15 features a half note in the grand staff and a quarter note in the treble staff. Dynamic markings include *f* and *ff* in the grand staff, and *p* in the treble staff. A pedaling line is shown below the grand staff.

III.

♩ = 80ca. each note with its own story
violent and tense!

15
fff *ff* *f* *mp* *mf* *mp*
fff
 Ped. |-----

5
mf *fff* *f* *mf*
mf *fff* *mf* dry
 (Ped.) |-----
 Ped. |-----

11
p *f* *p* *mf* *p* *mf* *p* *f* *mp* *f* *p*
 (Ped.) |-----

14

14

8

15

mp *f* *p* *pp* *mf* *sf* *ppp* *p* *sff*

timorous, univocal *far away*

(Ped.)

19

19

15

sff *f* *sff* *mp* *f* *mp* *p* *sff* *mf* *p*

violent! *dal tasto* *tired* *dall'alto* *with weight*

Ped.

22

22

8

15

p *pp* *ff suddenly!* *ppp* *pppp* *ppp* *pppp* *mp*

pizz. with nail

(Ped.)

$\text{♩} = \text{♩}$
 $\text{♩} = 64$

27 *with surprise, in one breath* *eco* *rall.* *a tempo, fluently* *with resignation*

ppp *sf* *p* *ppp* *clean* *fff*

bright! *mf* *p* *dry*

ff *f* *mf* *ff* *mp* *mf* *f*

31 *soft* *well articulated!*

sf *sf* *ppp* *p* *fff* *sff* *mf*

mp *p* *pppp* *tenuto!* *8vb* *sfff* *sff* *sf*

3:2

34 *Voice* *[SCH]* *not too long* *take plectrum*

mp *f* *p* *mf* *pp* *p* *p* *fff*

8va *15ma* *3:2* *ppp* *pp*

mp *ppp* *pp*

36 still fluently *rall.* tempo I with plectrum

36 *f* weighted, tired and austere

37 damp in A with plectrum *mf* *p* *ff* *p*

38 *pppp* *ff*

39 *sf*

40 *pp*

(Ped.)

Play 3 times

40 *mf* take hard mallet *pp* *f* *p*

41 *sf* *f* pluck the string with plectrum in E hit with mallet

42 *ff* *sf* *f* ossia hit the eraser with the fingertip

43 *sf* *f* ossia hit with fingertip

44 *sf* 3rd time hit with mallet handle *sf* pluck the string with plectrum as before

Ped. Ped.

V. 2007
 [Handwritten signature]